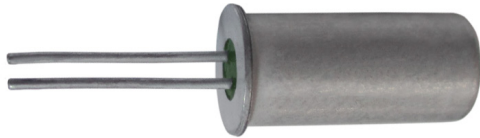
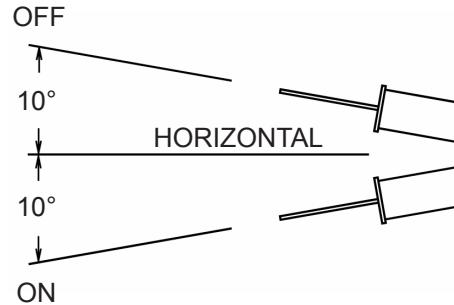


**Part Number: CM1323 Series**  
**Tilt Switch**  
**Product Data Sheet**

**PICTURE**



**OPERATION**



**FEATURES**

- Resistant to Ambient Environmental Conditions
- Case Material : Tin Plated
- Hermetically Sealed & Inert Gas Filled
- Customization Available

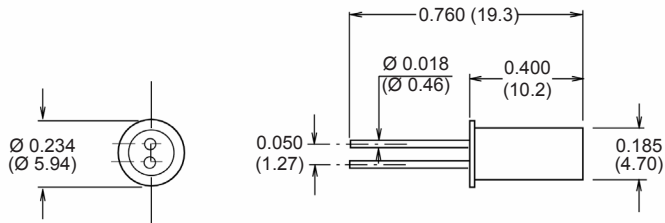
**GENERAL SPECIFICATIONS**

Contact Capacity	0.2 A, 240 VAC, 48 VA
Contact Resistance	1 Ω MAX
MAX Make Angle	10° Below Horizontal
MAX Break Angle	10° Above Horizontal
MAX Differential Angle	10° from Horizontal

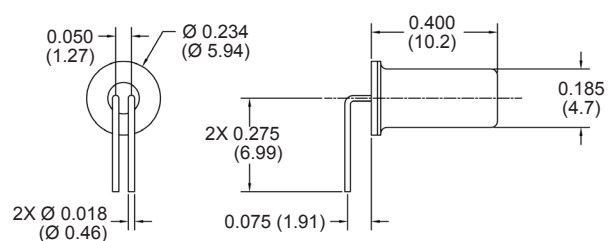
**DIMENSIONS**

Click drawings for more information.

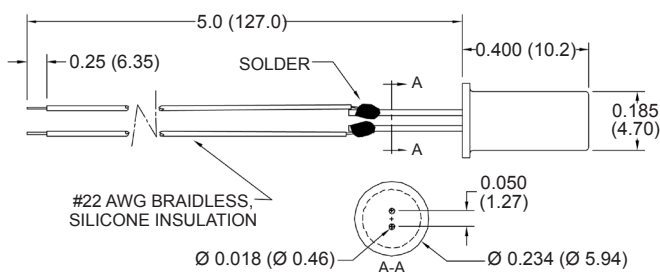
Part Number: CM1323-0



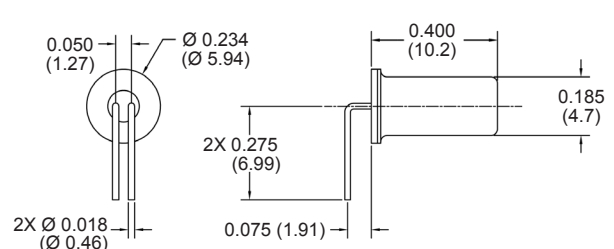
Part Number: CM1323-2



Part Number: CM1323-4



Part Number: CM1323-6



Drawings not to scale. All dimensions in inches (mm) nominal.

As part of the company policy of continued product improvement, specifications may change without notice. Our sales office will be pleased to help you with the latest information on this product range and the details of our full design and manufacturing service. All products are supplied to our standard conditions of sale unless otherwise agreed in writing.

**Phone: (1) 973 777 6900**

**www.comus-intl.com**

**Fax: (1) 973 777 8405**