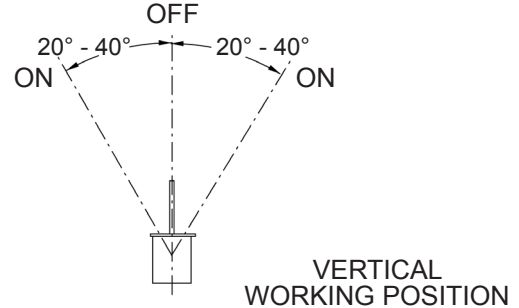


**Part Number: CM1430 Series**  
**Tip-Over Switch**  
**Product Data Sheet**

**PICTURE**



**OPERATION**



**FEATURES**

- Resistant to Ambient Environmental Conditions
- Case Material : Tin Plated
- Hermetically Sealed & Inert Gas Filled
- Customization Available

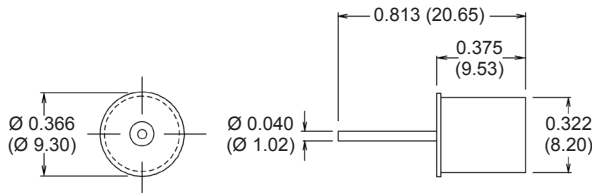
**GENERAL SPECIFICATIONS**

Contact Capacity	1 A at 120 VAC
Contact Resistance	3 Ω MAX
Tip-Over Angle	20° - 40° from vertical
Operating Temperature	-37°C +100°C
Storage Temperature	-40°C +125°C

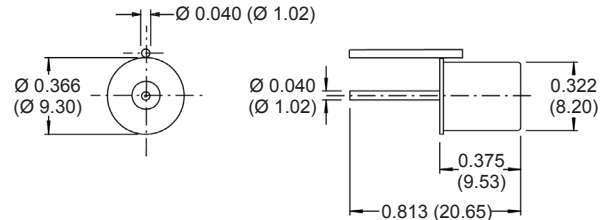
**DIMENSIONS**

Click drawings for more information.

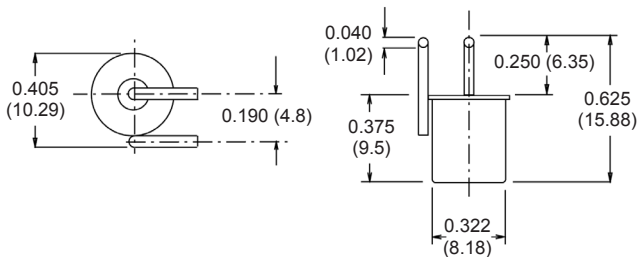
Part Number: CM1430-0



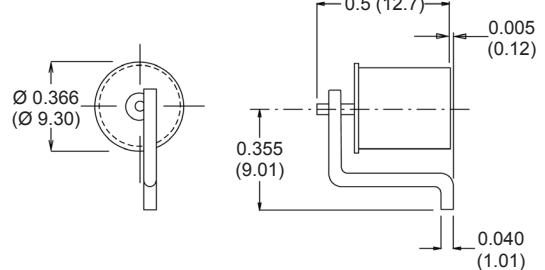
Part Number: CM1430-1



Part Number: CM1430-5



Part Number: CM1430-6



Drawings not to scale. All dimensions in inches (mm) nominal.

As part of the company policy of continued product improvement, specifications may change without notice. Our sales office will be pleased to help you with the latest information on this product range and the details of our full design and manufacturing service. All products are supplied to our standard conditions of sale unless otherwise agreed in writing.

**Phone: (1) 973 777 6900**

**www.comus-intl.com**

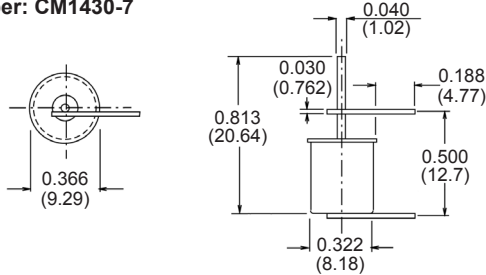
**Fax: (1) 973 777 8405**

**Part Number: CM1430 Series**  
**Tip-Over Switch**  
**Product Data Sheet**

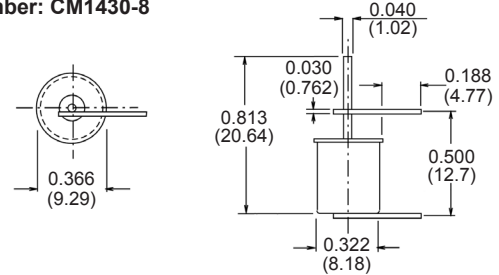
## DIMENSIONS

Click drawings for more information.

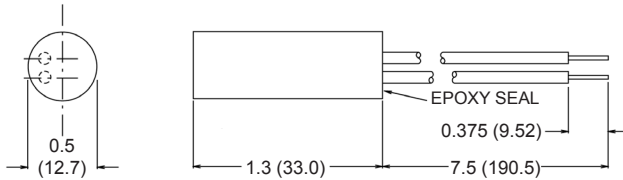
**Part Number: CM1430-7**



**Part Number: CM1430-8**

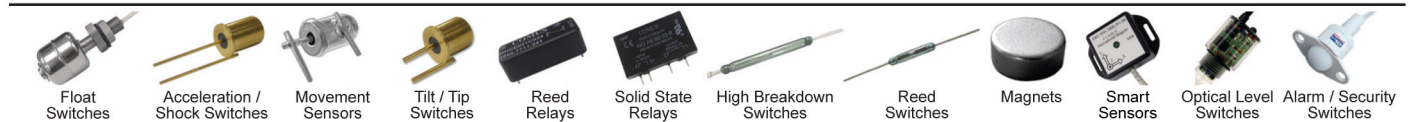


**Part Number: CM1430-70**



Drawings not to scale.  
 All dimensions in inches (mm) nominal.

### TAKE A LOOK AT OUR VARIETY OF PRODUCTS



As part of the company policy of continued product improvement, specifications may change without notice. Our sales office will be pleased to help you with the latest information on this product range and the details of our full design and manufacturing service. All products are supplied to our standard conditions of sale unless otherwise agreed in writing.

**Phone: (1) 973 777 6900**

**www.comus-intl.com**

**Fax: (1) 973 777 8405**

Belgium: + 32 (0)12 390400 - Comus Europe Ltd (Assembletech) UK: +44 (0) 1255 862236 - Germany: +49 (0)911 923 15 943 - Netherlands: +31(0)45 54 39 345 - India: +(91) (44) 43219090  
 ©2014 Copyright Comus International, 454 Allwood Road, Clifton NJ 07012, USA

An ISO 9001 Certified Company