

NOTES:

1. ELECTRICAL:

1.1 CONTACT CAPACITY 0.1 A @ 120 VAC, 0.2 A @ 120 VDC RESISTIVE.

1.2 CONTACT RESISTANCE 5 OHMS MAX.

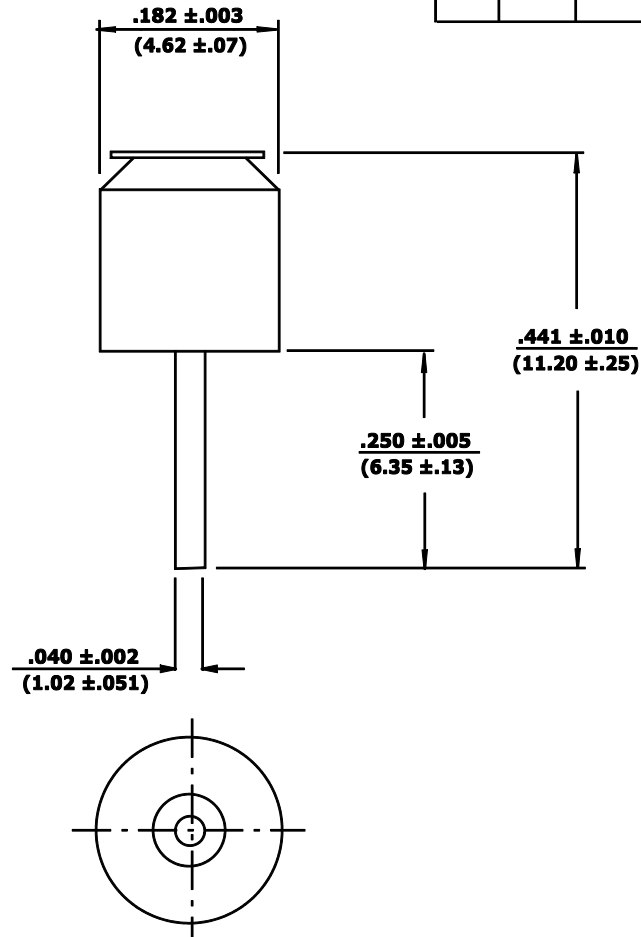
2. OPERATE:

2.1 OPERATING TEMPERATURE -37 DEG. C TO 100 DEG. C.

3. EXTERNAL FINISH:

3.1 TIN PLATED.

REV.	DATE	REVISION RECORD	DR.
A	06/18 1999	ORIGINAL	S.H.



VIBRATION SWITCH



**NORMALLY CLOSED-CENTER
ELECTRODE DOWN**



**NORMALLY OPEN-CENTER
ELECTRODE UP**



**MAY BE OPEN OR CLOSED
AT HORIZONTAL POSITION**

<p>COMUS INTERNATIONAL 454 ALLWOOD RD. CLIFTON, NJ 07012 U.S.A. PH (973) 777-6900</p>			
<p>TOLERANCES (except as noted)</p> <p>DECIMAL + .01 (.254) 2 Digit - .005 (.127) 3 Digit</p> <p>FRACTIONAL + 1/64 (.397) ANGULAR ± 1/2 °</p>	REF.:	SCALE: NONE	DRAWN BY: S.H.
	APPROVED:		
TITLE: VIBRATION SWITCH		DATE: 06/18/99	DRAWING NUMBER: CM1800-0
		DATE:	