

NOTES:

1. ELECTRICAL:

1.1 CONTACT CAPACITY: 20 A @ 120 VAC.

1.2 CONTACT RESISTANCE 3 OHMS MAX.

2. OPERATE:

2.1 MAKE BEFORE BREAK ACTION.

2.2 MAX. BREAK ANGLE 10 DEG. ABOVE HORIZONTAL.

2.3 MAX. MAKE ANGLE 10 DEG. BELOW HORIZONTAL.

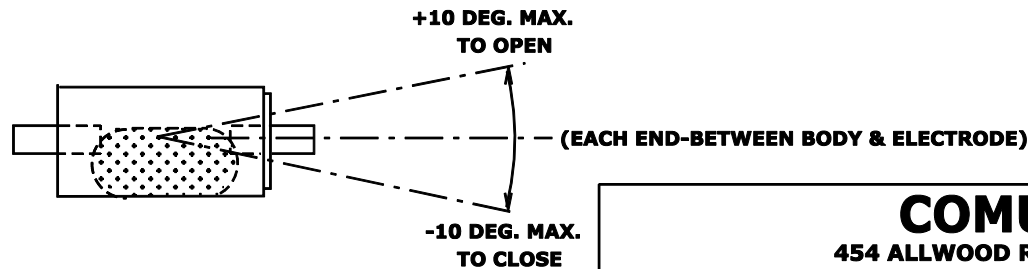
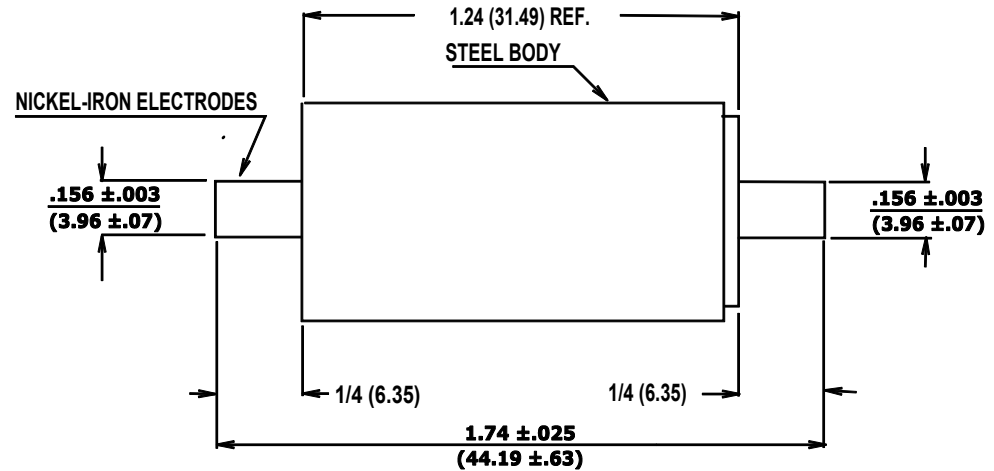
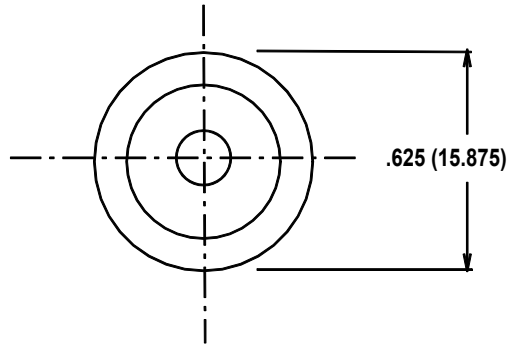
2.4 DIFFERENTIAL ANGLE 10 DEG. MAX.

2.5 OPERATING TEMPERATURE -37 DEG. C TO 100 DEG. C.

3. EXTERNAL FINISH:

3.1 EXTERNALLY TIN PLATED.

REV.	DATE	REVISION RECORD	DR.
C	06/18 1999	UPDATE TO ISO 9000	S.H.



INTERMEDIATE ON BETWEEN ELECTRODES

<h2>COMUS INTERNATIONAL</h2> <p>454 ALLWOOD RD. CLIFTON, NJ 07012 U.S.A. PH (973) 777-6900</p>			
TOLERANCES (except as noted)		REF.:	SCALE: NONE
DECIMAL $\pm .01 (.254)$ 2 Digit $\pm .005 (.127)$ 3 Digit		DRAWN BY: S.H.	APPROVED:
FRACTIONAL $\pm 1/64 (.397)$ ANGULAR $\pm 1/2^\circ$		TITLE: S.P.D.T. TILT SWITCH, MAKE BEFORE BREAK	DATE:
		DATE: 01/29/98	DRAWING NUMBER: CM2050-0