

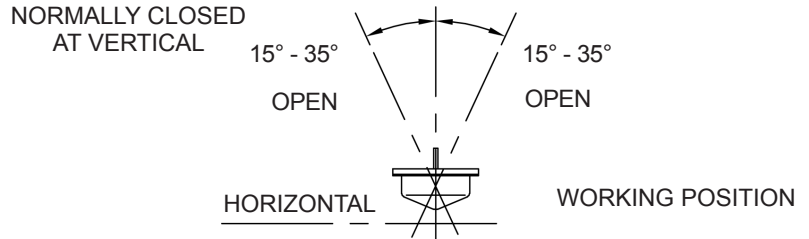
Part Number: CW1725 Series
Tip-Over Switch
Product Data Sheet



PICTURE



OPERATION



FEATURES

- Resistant to Ambient Environmental Conditions
- Case Material : Tin Plated
- Customization Available
- Hermetically Sealed & Inert Gas Filled
- Invertibility Protected

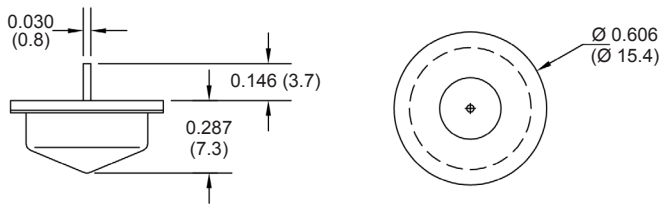
✓ RoHS Compliant

GENERAL SPECIFICATIONS

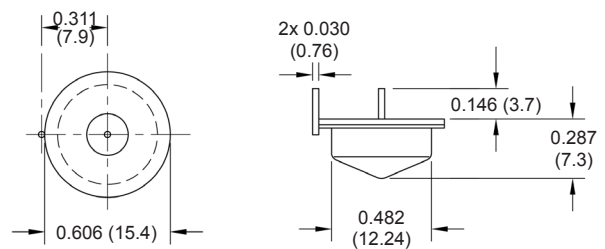
Contact Capacity	0.25 A, 60 V MAX, 3 VA MAX
Contact Resistance	30 Ω MAX at 5 VDC
Break Angle	15° to 35° from vertical
Remake Angle	8° MIN from vertical
Operating Temperature	-37° to 100°C

DIMENSIONS Click drawings for more information.

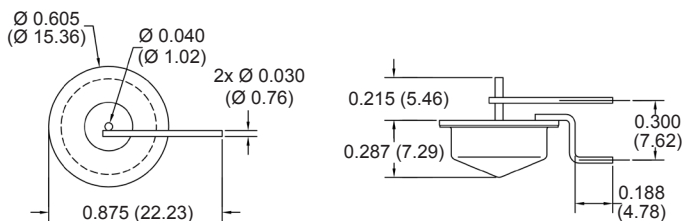
Part Number: CW1725-0



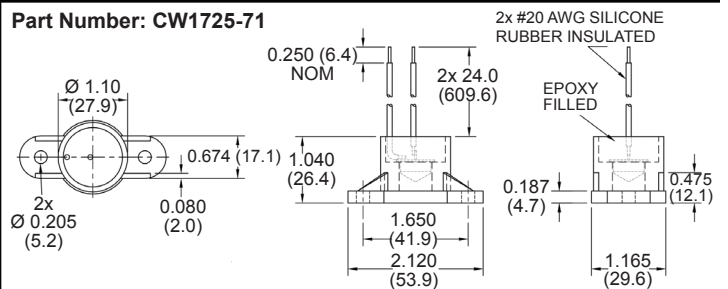
Part Number: CW1725-1



Part Number: CW1725-14



Part Number: CW1725-71



Drawings not to scale. All dimensions in inches (mm) nominal.

As part of the company policy of continued product improvement, specifications may change without notice. Our sales office will be pleased to help you with the latest information on this product range and the details of our full design and manufacturing service. All products are supplied to our standard conditions of sale unless otherwise agreed in writing.

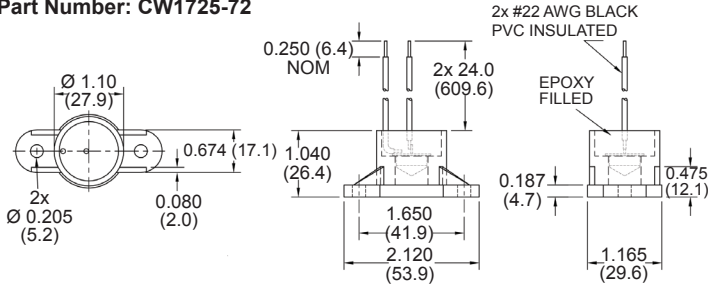
Phone: (1) 973 777 6900 **www.comus-intl.com** **Fax: (1) 973 777 8405**

Part Number: CW1725 Series
Tip-Over Switch
Product Data Sheet

DIMENSIONS

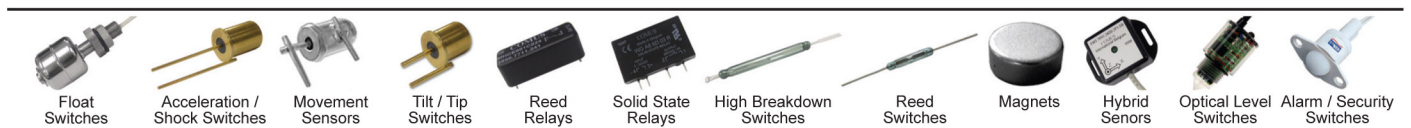
Click drawings for more information.

Part Number: CW1725-72



Drawings not to scale.
 All dimensions in inches (mm) nominal.

TAKE A LOOK AT OUR VARIETY OF PRODUCTS



As part of the company policy of continued product improvement, specifications may change without notice. Our sales office will be pleased to help you with the latest information on this product range and the details of our full design and manufacturing service. All products are supplied to our standard conditions of sale unless otherwise agreed in writing.

Phone: (1) 973 777 6900

www.comus-intl.com

Fax: (1) 973 777 8405