

Part Number: CW1760 Series
Tip Over Switch
Product Data Sheet

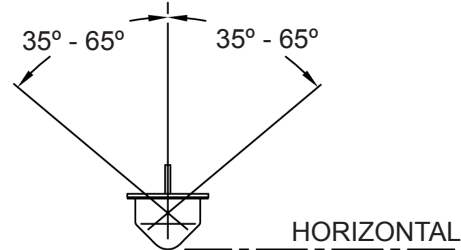
PICTURE



✓ **RoHS Compliant**

OPERATION

NORMALLY CLOSED AT VERTICAL



FEATURES

- Case Material : Tin Plated
- Customization Available

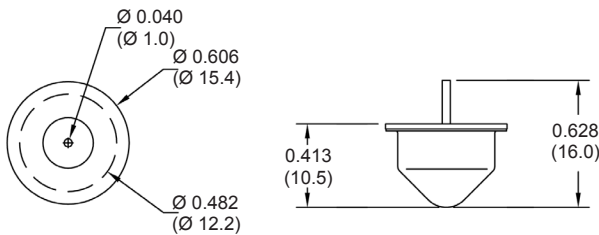
GENERAL SPECIFICATIONS

Contact Capacity	25 A MAX
Contact Resistance	30 Ohms MAX at 5 VDC
Break Angle	35° - 65°
Remake Angle	35° MIN
Operating Temperature	-37° +100°C
Storage Temperature	-40° +125°C
Contact Current	0.25 A MAX

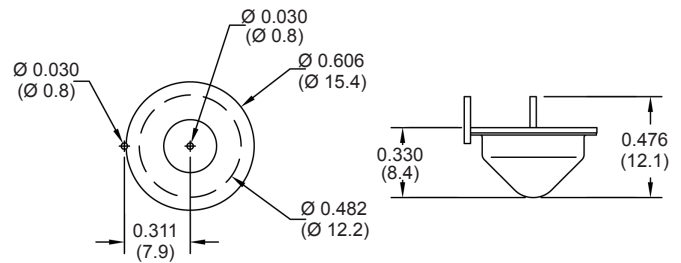
DIMENSIONS

Click drawings for more information.

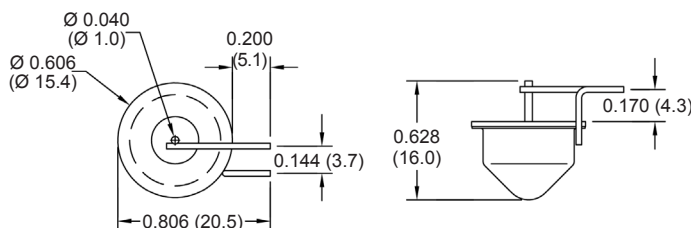
Part Number: CW1760-0



Part Number: CW1760-1



Part Number: CW1760-5



Drawings not to scale.
 All dimensions in inches (mm) nominal.

As part of the company policy of continued product improvement, specifications may change without notice. Our sales office will be pleased to help you with the latest information on this product range and the details of our full design and manufacturing service. All products are supplied to our standard conditions of sale unless otherwise agreed in writing.

Phone: (1) 973 777 6900

www.comus-intl.com

Fax: (1) 973 777 8405