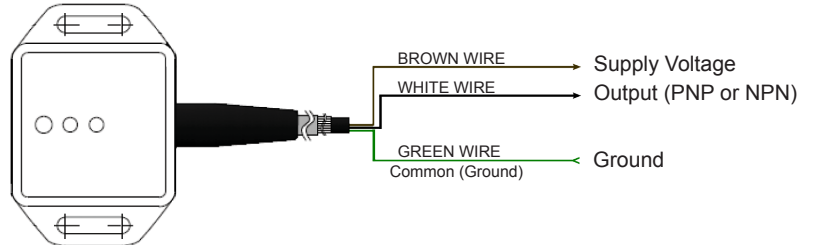


Part Number: PDT1002 Series
Teachable Tilt Module
Product Data Sheet

PICTURE



WIRING DIAGRAM



✓RoHS Compliant

LED STATUS

GREEN LED - ON: Device On
 OFF: Device Off

RED LED - ON: Output is Set
 OFF: Output is Off

ORDERING INFORMATION

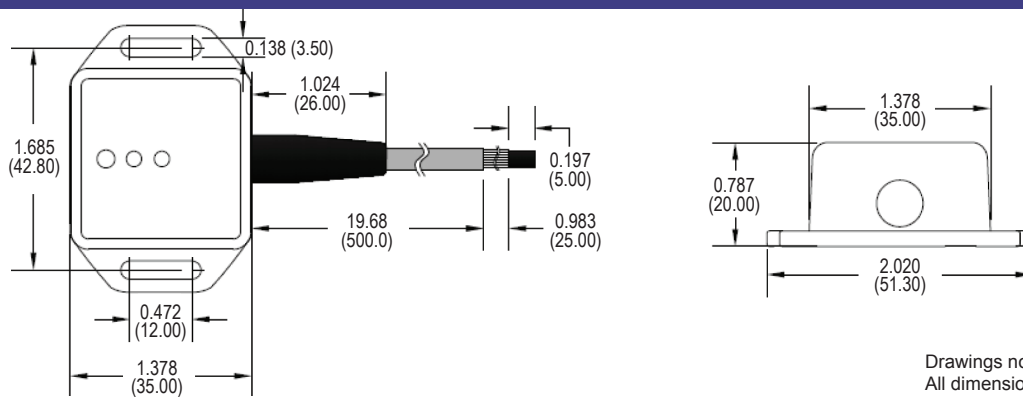
PDT1002 - 1
 Base Part 1 = PNP Version
 2 = NPN Version

*Custom ranges available, please contact factory.

FEATURES

- Resistant to Ambient Environmental Conditions
- Construction : ABS Housing
- Mechanical Stress Resistant
- Output Options are PNP or NPN
- Teachable with a simple push button.

DIMENSIONS



Drawings not to scale.
 All dimensions in inches (mm) nominal.

SPECIFICATION

INPUT	
Supply Voltage	6 to 30 VDC
Supply Current	10 mA MAX
OUTPUT	
Tilt Angle	teachable in EEPROM (x & y: -180° to +180°, z: 0 to 180°)
Tilt Axes	teachable in EEPROM (x, y or z)
Zero Level Change vs Temperature	Delta from 25°C ±0.04°/°C
Tilt Resolution	<0.5°
Response Time	100 Hz
Shock Survivability	10000 g for 0.1 ms
Switching Voltage MAX	30 VDC
Switching Current MAX	100 mA
OTHER SPECIFICATIONS	
Operation Temperature	-20° +70°C
Case Material	ABS

As part of the company policy of continued product improvement, specifications may change without notice. Our sales office will be pleased to help you with the latest information on this product range and the details of our full design and manufacturing service. All products are supplied to our standard conditions of sale unless otherwise agreed in writing.

Phone: (1) 973 777 6900

www.comus-intl.com

Fax: (1) 973 777 8405

Part Number: PDT1002 Series
Teachable Tilt Module
Product Data Sheet

OPERATIONS			
ITEM	STATUS	FUNCTION	
		NORMAL OPERATION	TEACH
Green LED	On	Normal working	
	Off	Supply voltage to low or the output holds its value, because a motion is detected	
	Blinks Slow		Axes setting
	Blinks Fast		Teaching in set and reset position
Red LED	On	Output "On"	
	Off	Output "Off"	
	Blinks 1 Times		Set X-axis
	Blinks 2 Times		Set Y-axis
	Blinks 3 Times		Set Z-axis

Axes setting mode:

This mode is selected by holding down the push button between 1 to 3 s. just until the green LED blinks slow. At that moment the selection of the axes can be do by pushing again the button for less then 1s. The number of blinks from the red LED indicates what kind of axes is selected (see table).

Set and reset teach in mode:

This mode is selected by holding down the push button for more then 3 s. just until the green LED blinks fast. At that same moment the red LED goes "on". Red LED "on" means teach in set position. Red Led "off" means teach in reset position. The teach in function can be activated by pushing the button for less then 1s.

Normal operation mode:

By holding down the button for more than 1s the module goes back in normal operation.

As part of the company policy of continued product improvement, specifications may change without notice. Our sales office will be pleased to help you with the latest information on this product range and the details of our full design and manufacturing service. All products are supplied to our standard conditions of sale unless otherwise agreed in writing.

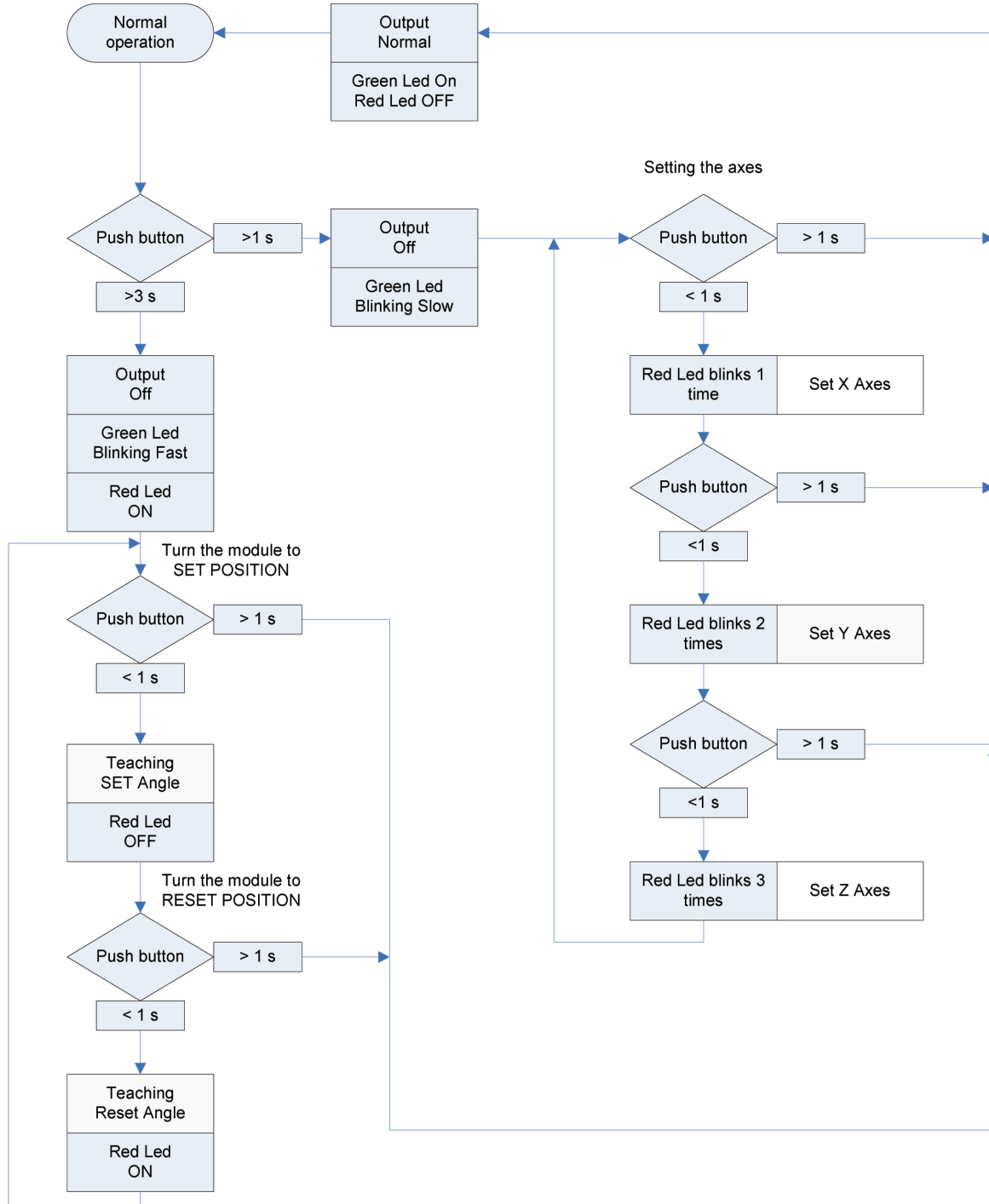
Phone: (1) 973 777 6900

www.comus-intl.com

Fax: (1) 973 777 8405

Part Number: PDT1002 Series
Teachable Tilt Module
Product Data Sheet

FLOWCHART



As part of the company policy of continued product improvement, specifications may change without notice. Our sales office will be pleased to help you with the latest information on this product range and the details of our full design and manufacturing service. All products are supplied to our standard conditions of sale unless otherwise agreed in writing.

Phone: (1) 973 777 6900

www.comus-intl.com

Fax: (1) 973 777 8405

Belgium: + 32 (0)12 390400 - Assemtech, UK: +44 (0) 1255 862236 - Germany: +49 (0)911 923 15 943
 ©2012 Copyright Comus International, 454 Allwood Road, Clifton NJ 07012, USA

An ISO 9001 Certified Company