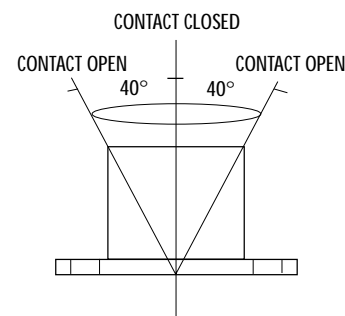
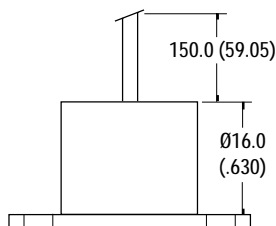
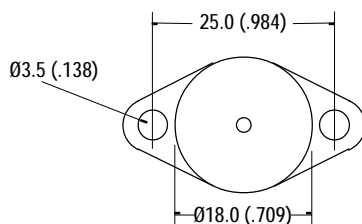


## Comus Group of Companies

## PRODUCT DATA SHEET

Manufactured in the UK



## SPECIFICATION

CONTACT FORM / STYLE		Normally Closed
SWITCHING VOLTAGE	Max. Vac RMS	60
SWITCHING CURRENT	Max. A	0.25
SWITCHING CAPACITY	Max. VA	3
OPERATING ANGLE	Deg. ° Max.	40° ± 15°
CONTACT RESISTANCE	Max. Ω	6
OPERATING TEMPERATURE	Deg. °C	-20° +70°
STORAGE TEMPERATURE	Deg. °C	-25° +70°
CASE MATERIAL		Polypropylene
CABLE / TERMINATION		2 x round 0.14 <sup>2</sup> PVC covered and insulated

This product is fully sealed to give maximum mechanical protection and minimise the ingress of dust and moisture. As a guide, the product is expected to meet the requirements of IP65.

## TIP OVER SWITCH MODULE - Mercury Free

PART NUMBER  
**TTS60/15**

Rev. No.	Revision Note	Date	Signature
C	Web Site 2000	1-4-00	RG

The Comus Group of Companies consist of:  
 Assemtech Europe Limited  
 E. Bachem GmbH  
 Comus International  
 W. Gunther GmbH  
 Gunther Belgium  
 Gunther France  
 S.T.G.

As part of the company policy of continued product improvement, specifications may change without notice. Our sales office will be pleased to help you with the latest information on this product range and details of our full design and manufacturing service. All products are supplied to our standard conditions of sale otherwise agreed in writing.