

**Part Number: PRA 240/30 (Alternate Part No: S1370NORS)**  
**Proximity Switch - Reed Switch based**  
**Cylindrical - Normally Open Contacts - Suggested Magnet: PRM**

**PICTURE**



**✓RoHS Compliant**

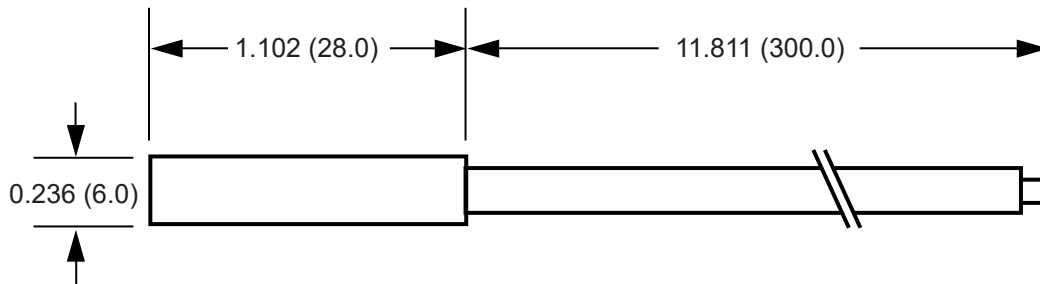
**APPLICATIONS INCLUDE**

- Position and limit sensing
- Linear actuators
- Security system switch
- Door Switch

**FEATURES**

- Also available in all Blue.
- Custom cable lengths, strip lengths, cable types, terminations.
- If you do not see what you need, just ask, as there is a strong possibility we can do it !

**DIMENSIONS**



Drawings not to scale.  
 All dimensions in inches (mm) nominal.

**SPECIFICATION**

Contact Form / Style	Normally Open
Switching Capacity (Resistive)	10 W/VA Max.
Switching Voltage	400 VAC Max.
Switching Current	0.5 A Max.
Carry Current	1.0 A Max.
Breakdown Voltage	600 VDC Min.
Contact Resistance	150 mOhms Max.
Switching Distance	5 mm Min.
Operating Temperature Range	-20°C +85°C
Storage Temperature Range	-25°C +90°C
Case Material	Black Nylon 66
Cable	2 x Round 0.14mm <sup>2</sup> PVC covered Black and insulated Brown / White

As part of the company policy of continued product improvement, specifications may change without notice. Our sales office will be pleased to help you with the latest information on this product range and the details of our full design and manufacturing service. All products are supplied to our standard conditions of sale unless otherwise agreed in writing.

**Phone: (1) 973 777 6900**

**www.comus-intl.com**

**Fax: (1) 973 777 8405**

Belgium: + 32 (0)12 390400 - Comus Europe Ltd (Assemtch) UK: +44 (0) 1255 862236 - Germany: +49 (0)911 923 15 943 - Netherlands: +31(0)45 54 39 345 - India: +(91) (44) 43219090

©2020 Copyright Comus International, 454 Allwood Road, Clifton NJ 07012, USA