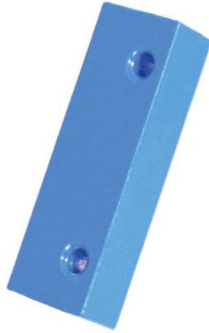


Part Number: PRM-SA-001 (Alternate Part No: S1751)

Aluminium Housed Magnet

Product Data Sheet

PICTURE



✓ RoHS Compliant

APPLICATIONS

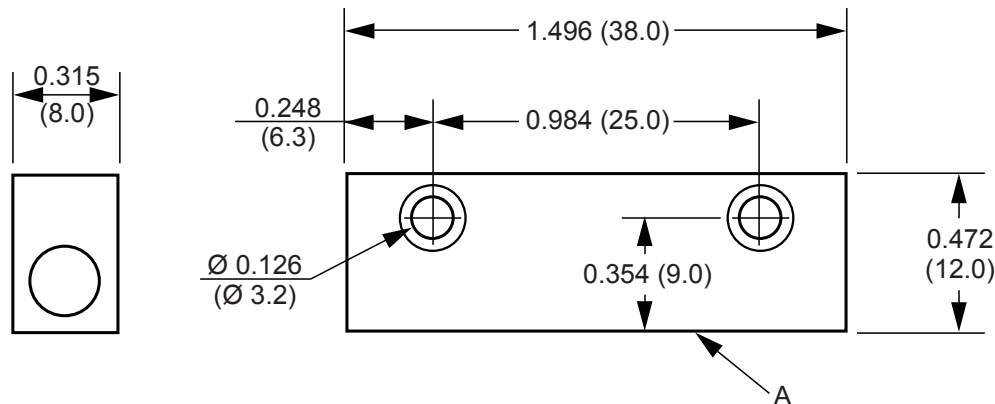
- Position and limit sensing.
- Linear actuators.
- Security system switch.
- Door switch.

OPTIONS

- Robust, sealed Internal Magnets.
- Custom Strengths available.
- Other colors available, at request.
- Powder coated housing for added corrosion resistance.

DIMENSIONS

Drawings not to scale.
All dimensions in inches (mm) nominal.



SPECIFICATION

Strength	Gauss	700 at Point A
Dimensions	Length mm	38
	Width mm	8
	Height mm	12
Hole Size	mm	3.2 mm
Operating Temperature Range	Celsius	-20°C to +105°C
Case Material		Blue Powder Coated Aluminium

As part of the company policy of continued product improvement, specifications may change without notice. Our sales office will be pleased to help you with the latest information on this product range and the details of our full design and manufacturing service. All products are supplied to our standard conditions of sale unless otherwise agreed in writing.

Phone: (1) 973 777 6900

www.comus-intl.com

Fax: (1) 973 777 8405

Belgium: + 32 (0)12 390400 - Comus Europe Ltd (Assemblech) UK: +44 (0) 1255 862236 - Germany: +49 (0)911 923 15 943 - Netherlands: +31(0)45 54 39 345 - India: +(91) (44) 43219090

©2015 Copyright Comus International, 454 Allwood Road, Clifton NJ 07012, USA